

# Mental Health at the Forefront:

How Early Intervention and Virtual Care Are Transforming Workers' Compensation

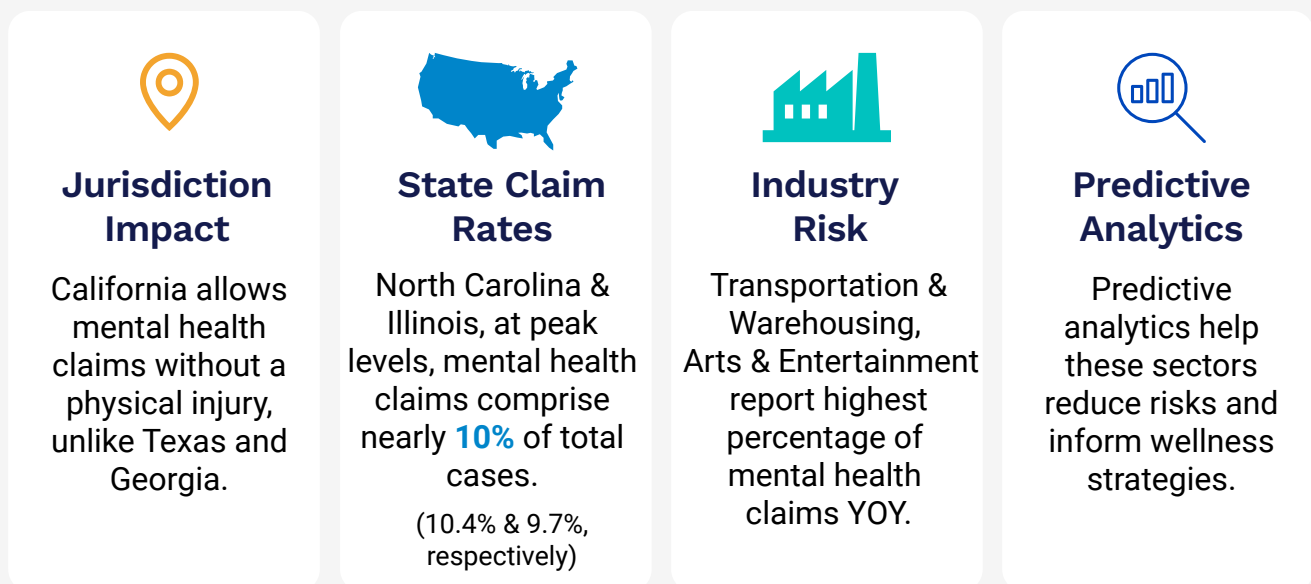


## By the Numbers:



Delays often stem from reporting inefficiencies, communication gaps, and provider shortages —barriers that contribute to prolonged treatment timelines and delayed claim closure.

## Trends to Watch:



Regardless of jurisdiction, **early action and tech-enabled** care are proven to drive **better recovery outcomes.**